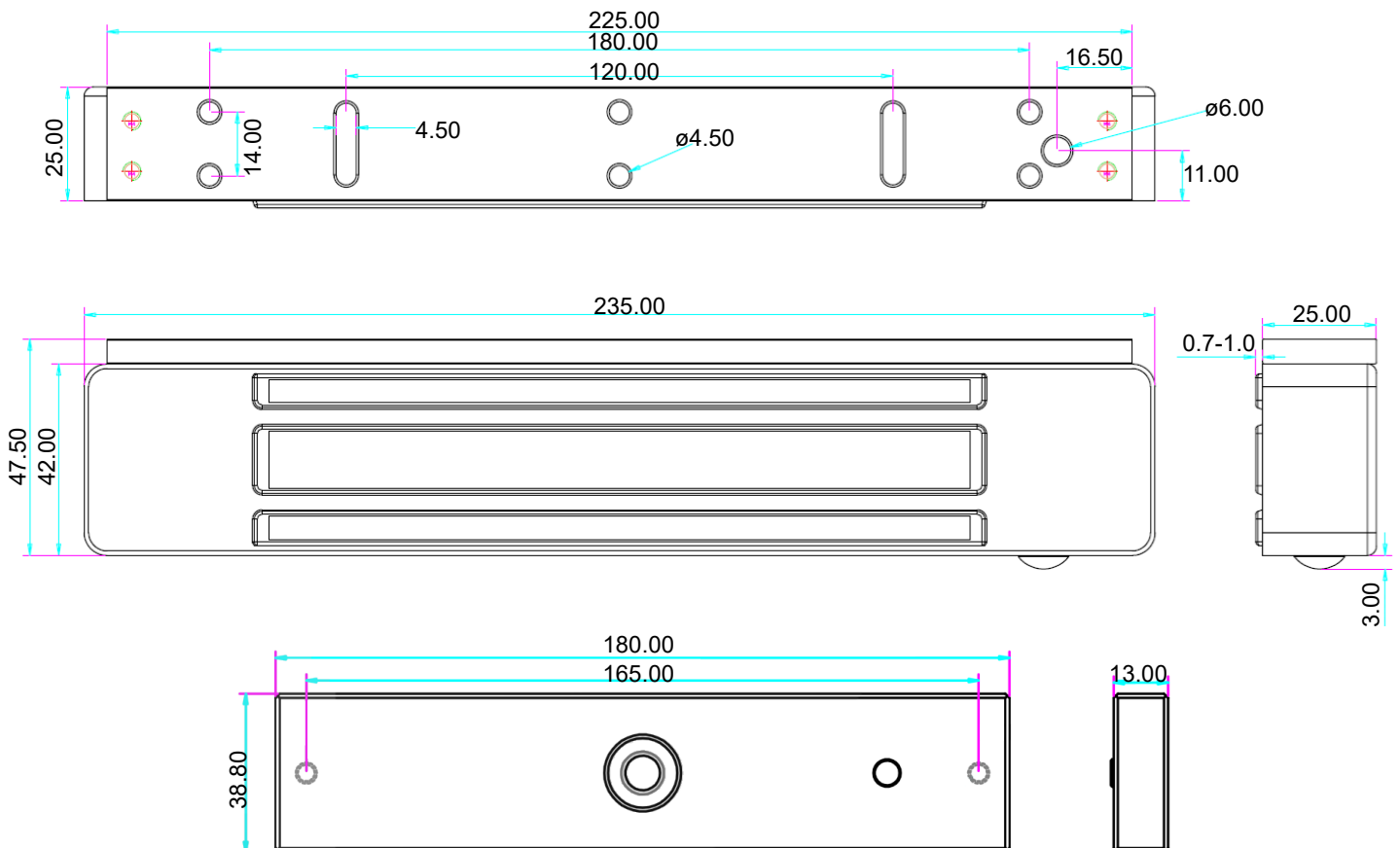


Tekniset tiedot

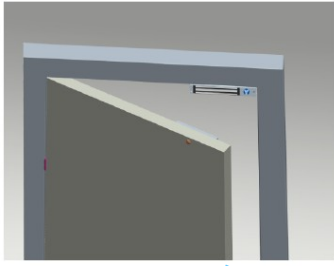
Käyttöjännite	12VDC / 24VDC $\pm 10\%$
Virta	12VDC / 500mA $\pm 10\%$ 24VDC / 250mA $\pm 10\%$
Pitovoima	280kg (600lbs) $\pm 10\%$
Mitat (mm)	Magneetti 235 x 47.5 x 25.5 Vastarauta 180 x 38.8 x 13
Materiaali	Ruostumaton teräs, SUS 304
IP luokitus	IP68
LED indikaatio	Vihreä lukossa, Punainen auki
Lukituksen tilatieto	NO / COM, max. 0.5A/30VDC
Paino	2.0kg
Käyttölämpötila	-20 - +55°C



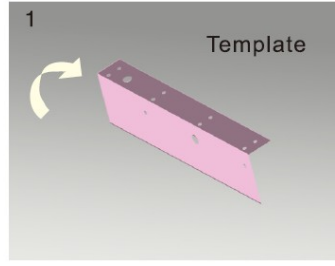
Mitat (mm)



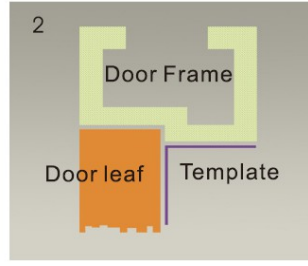
Asennusesimerkki



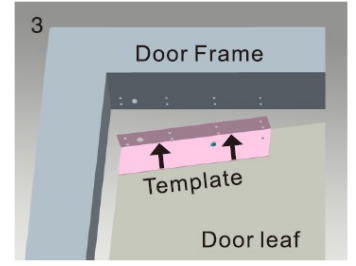
Vaiheet



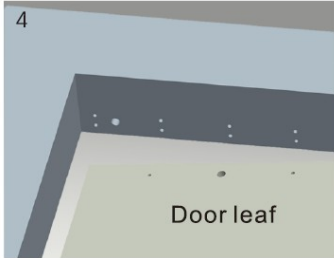
1 Käännä sapluuna 90°



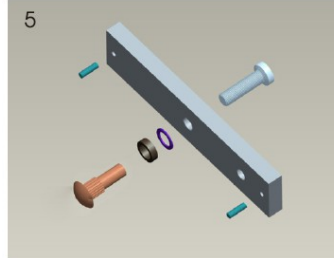
2 Sulje ovi. Aseta sapluunan yläosa karmia vasten ja alaosa ovilehtä vasten.



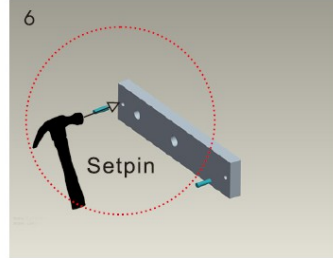
3 Merkitse vastaraudan ja magneettilukon ruuvien paikat ovilehteen ja -karmiin.



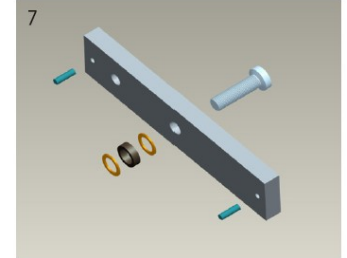
4 Poraa reiät merkittyjen kohtien mukaisesti.



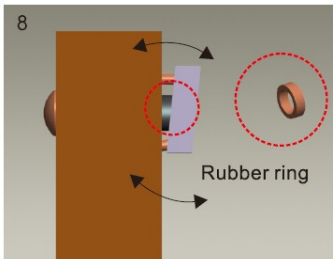
5 Etsi kuvan mukaiset vastaraudan asennustarvikkeet.



6 Lyö vasaralla ohjaustapit kiinni vastarautaan.



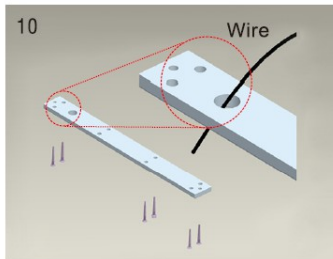
7 Tee kuvan mukainen yhdistelmä. Aluslevy – kumirengas – aluslevy.



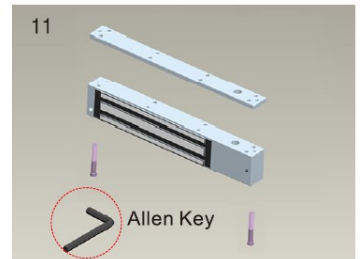
8 Aseta kumirengas vastaraudan ja ovilehden väliin.



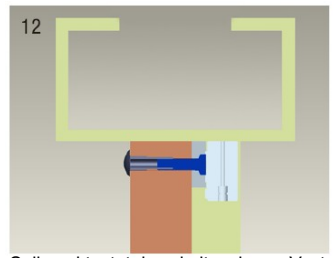
9 Irroita asennuslevy kuusiokoloavaimella magneettilukosta.



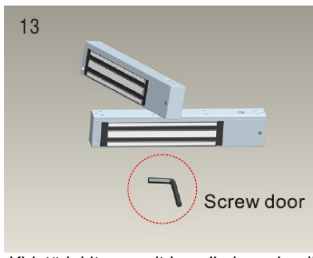
10 Pujota johto reiästä ja kiinnitä asennuslevy ovenkarmiin aiemmin porattujen reikien mukaisesti.



11 Kiinnitä magneettilukko asennuslevyn kuusiokoloavaimella.



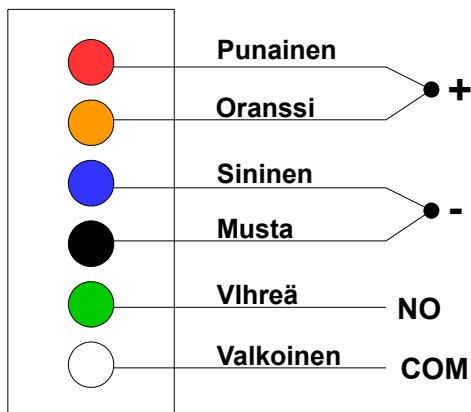
12 Sulje ovi testataksesi pitovoimaa. Vastaraudan ja magneettilukon välistä kulmaa voidaan säätää lisäämällä tai vähentämällä aluslevyjä.



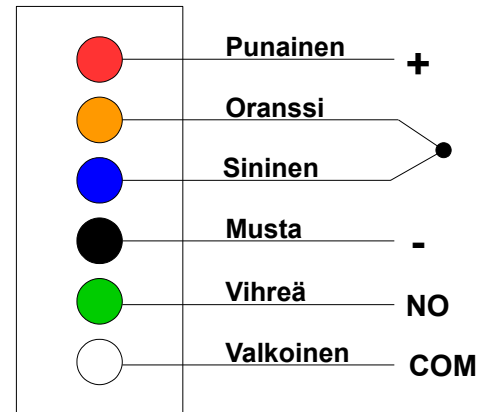
13 Kiristä lukitusruuvit kuusiokoloavaimella.

Kytkenä

12VDC



24VDC

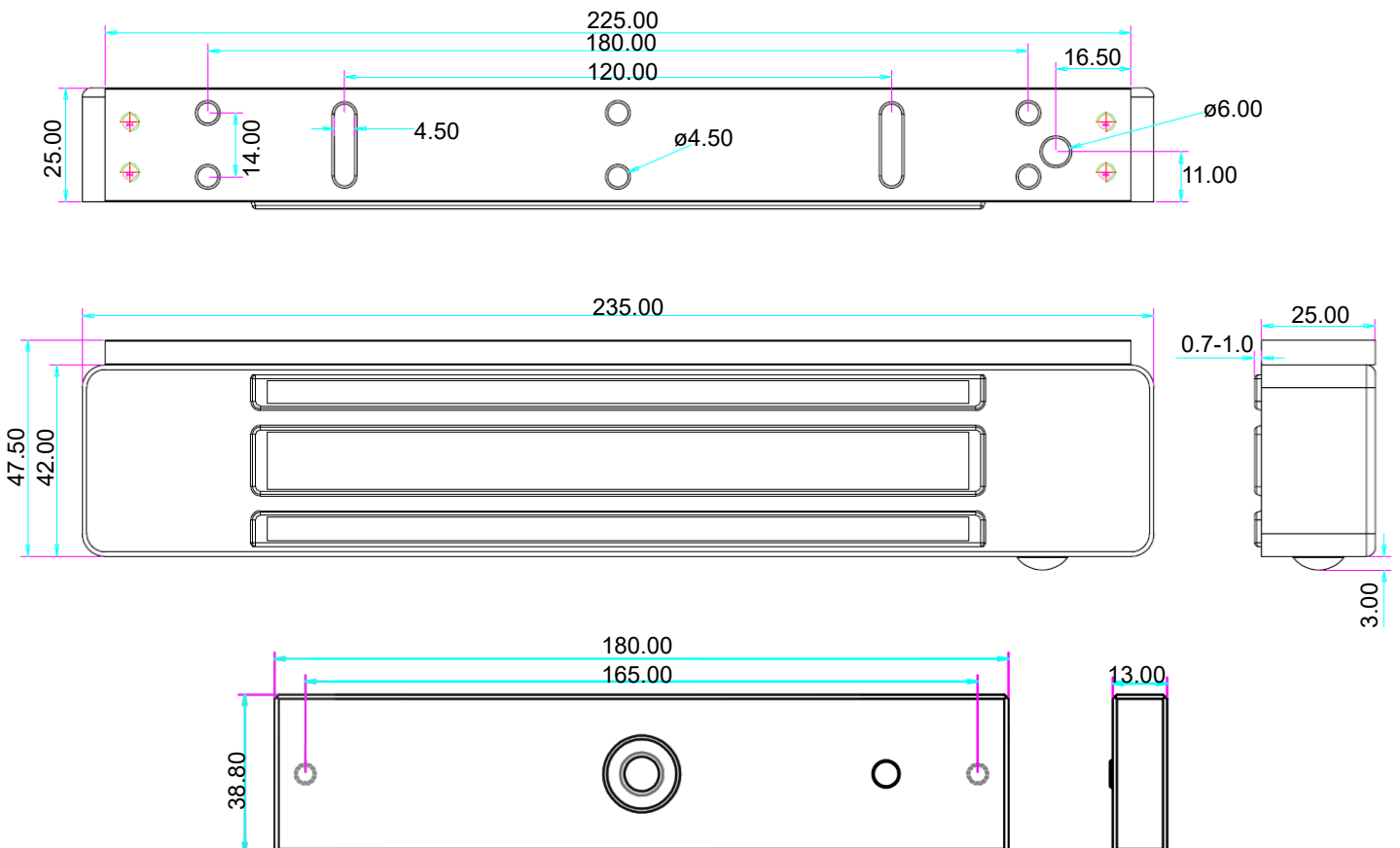


Specifications

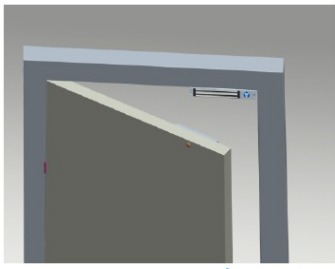
Operating voltage	12VDC / 24VDC $\pm 10\%$
Current	12VDC / 500mA $\pm 10\%$ 24VDC / 250mA $\pm 10\%$
Holding force	280kg (600lbs) $\pm 10\%$
Dimensions (mm)	Magnet 235 x 47.5 x 25.5 Armature plate 180 x 38.8 x 13
Material	Stainless steel, SUS 304
IP rating	IP68
LED indication	Green locked, Red unlocked
Lock signal output	NO / COM, max. 0.5A/30VDC
Weight	2.0kg
Operating temperature	-20 - +55°C



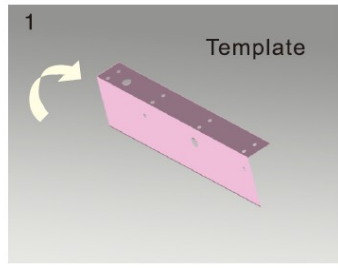
Dimensions (mm)



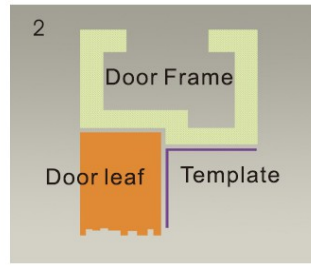
Installation example



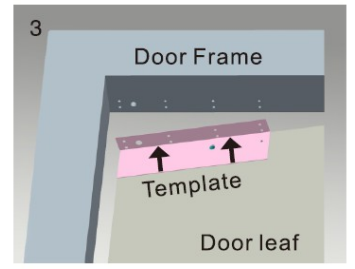
Steps →



1 Fold the template 90°



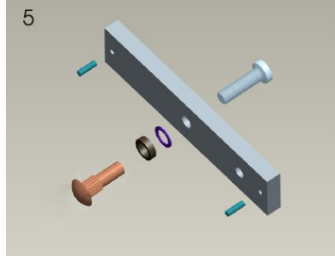
2 Close the door. Place the upper part of the template against the frame and the lower part against the door leaf.



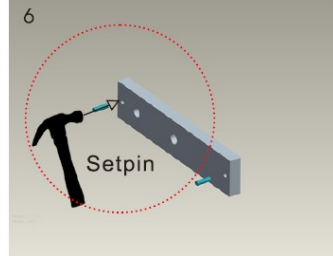
3 Mark screw positions of armature plate and magnetic lock on the door leaf and door frame.



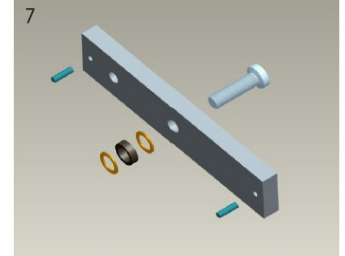
4 Drill holes based on the marked positions.



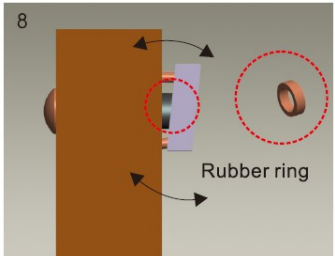
5 Look for the armature plate installation accessories as shown in the picture.



6 Use a hammer to tap the guide pins to the armature plate.



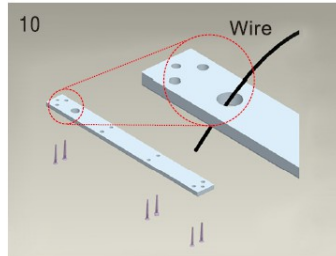
7 Make a combination based on the picture. Washer-rubber ring-washer.



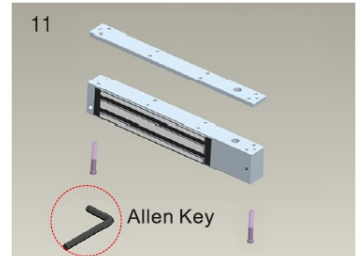
8 Place the rubber ring between armature plate and door leaf.



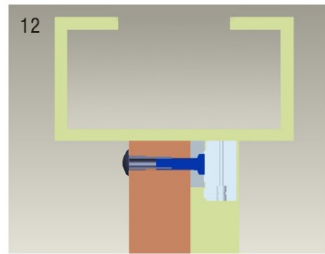
9 Use Allen key to remove the mounting plate from lock body.



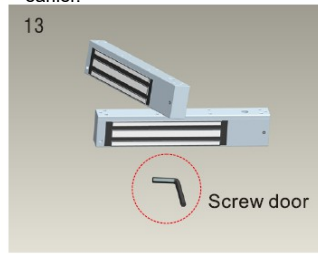
10 Thread the wire through the hole and attach the mounting plate to the door frame according to the holes drilled earlier.



11 Use Allen key to screw the lock body on to the mounting plate.



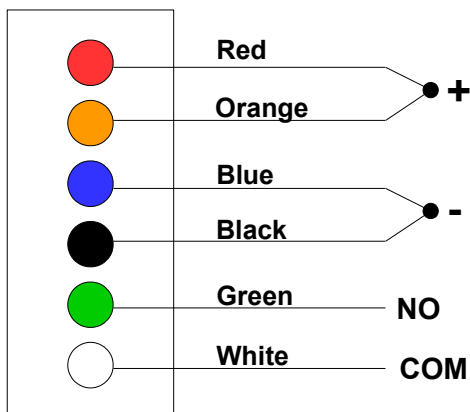
12 Close the door to test holding force. The angle between armature plate and magnetic lock can be adjusted by adding or reducing washers.



13 Tighten the tamper screws with the Allen key.

Wiring

12VDC



24VDC

