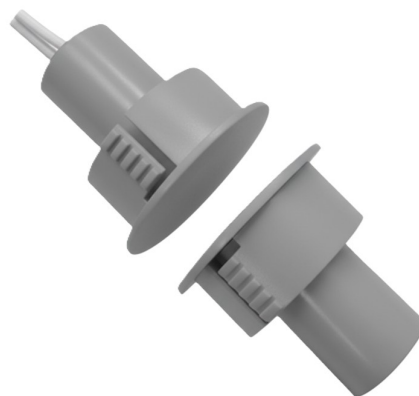




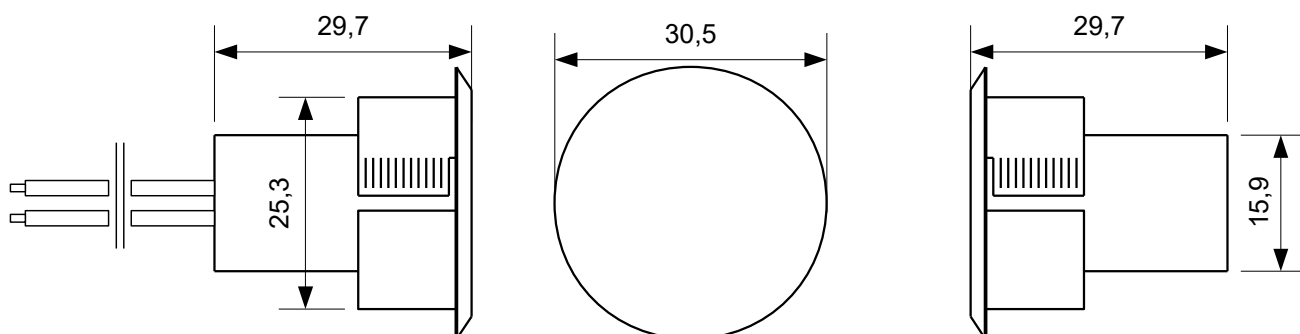
# Magnetic contact MK-250M2G

## Specifications

Dimensions	Magnet 30.5 x 29.7mm Contact 30.5 x 29.7mm
Contact function	2pcs SPDT NO/NC/COM
Mounting hole	25mm
Voltage max.	30V DC/AC
Current max.	0.2A
Operating gap	19mm
Material	ABS
Operating temp.	-25 - +80°C



## Dimensions (mm)



## Wiring

